



PARCO  
NATURALE  
**PREALPI  
GIULIE**

***Rangers' work in Prealpi Giulie Nature Park  
in the frame of Alpine convention:  
monitoring, prevention, surveillance, education***

***Bled, January 21st 2011***

# Where we are!



# Where we are!



## Transboundary Parks - Following Nature's Design





## Regional Forestry Corps

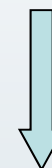
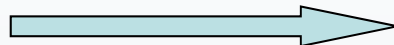
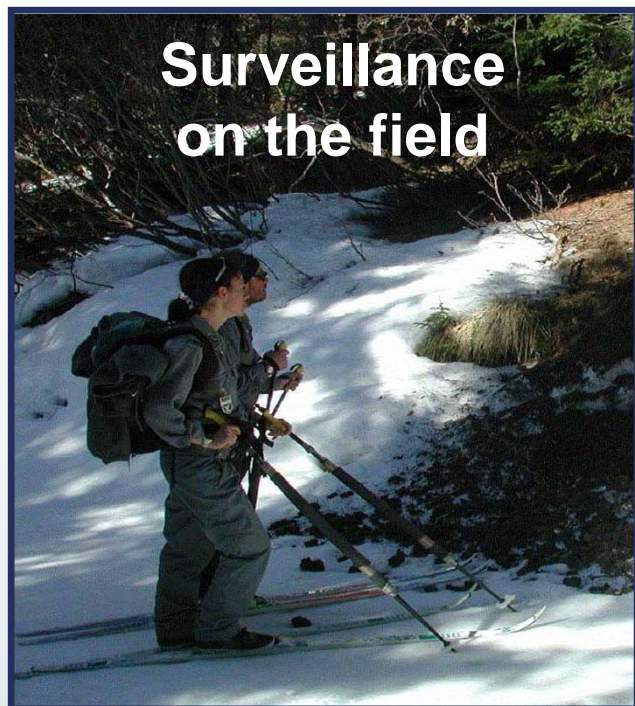


## Province Police

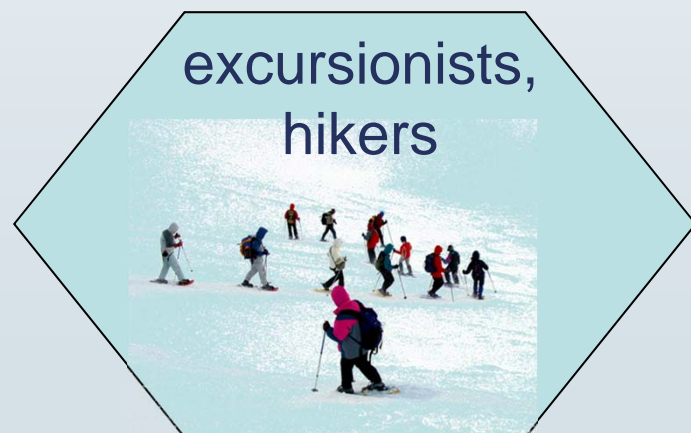
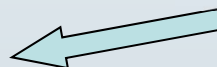




# Relationship Rangers staff – Park administration

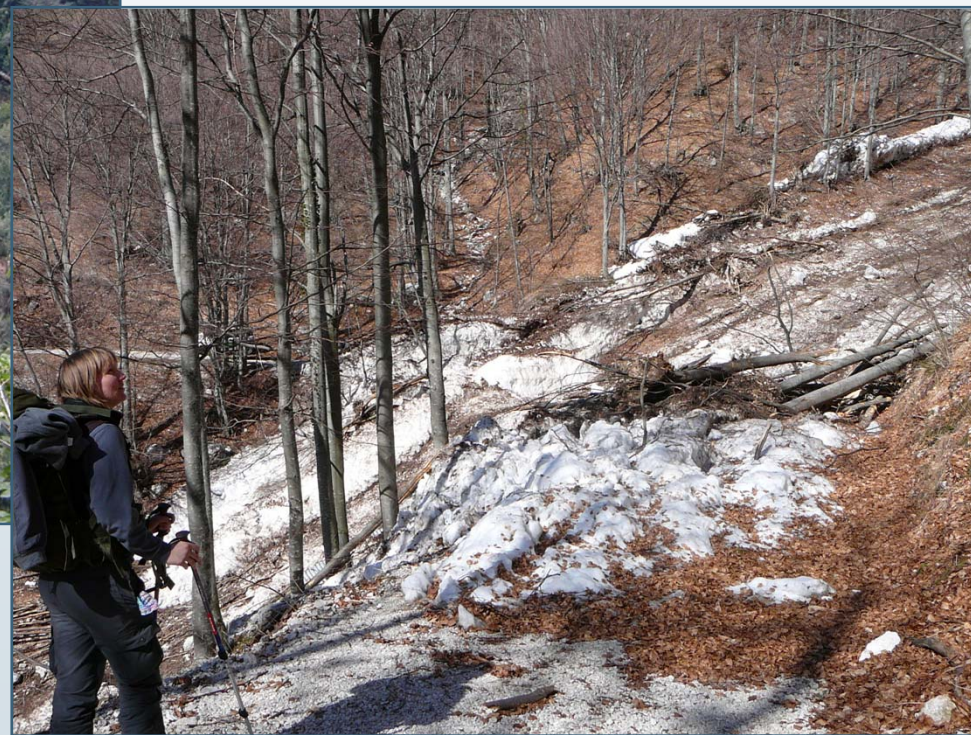


**Collected  
informations  
archives**



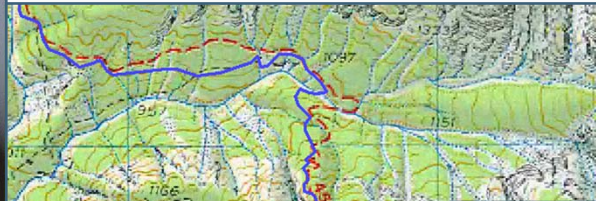


## Landslide and avalanche reporting, roads and forestry roads monitoring





## GPS georeferencing of Park trails



**Fair use of mountain huts and other buildings in Park area**







## Snow and avalanches survey



## Anti poaching service





## Health monitoring





## Flora and fauna monitoring from the littlest ...



... to the biggest !



## Firefighting in natural areas







## Wildlife census

**Corn Crane,  
Red Deer,  
Alpine Ibex,  
Chamois ...**





## Environmental education



## Information activities





## **Monitoring Park and neighbouring areas**

**Is day by day rangers' job**









***SEE YOU SOON  
IN PREALPI GIULIE  
NATURE PARK***

***[www.parcoprealpigiulie.it](http://www.parcoprealpigiulie.it)***